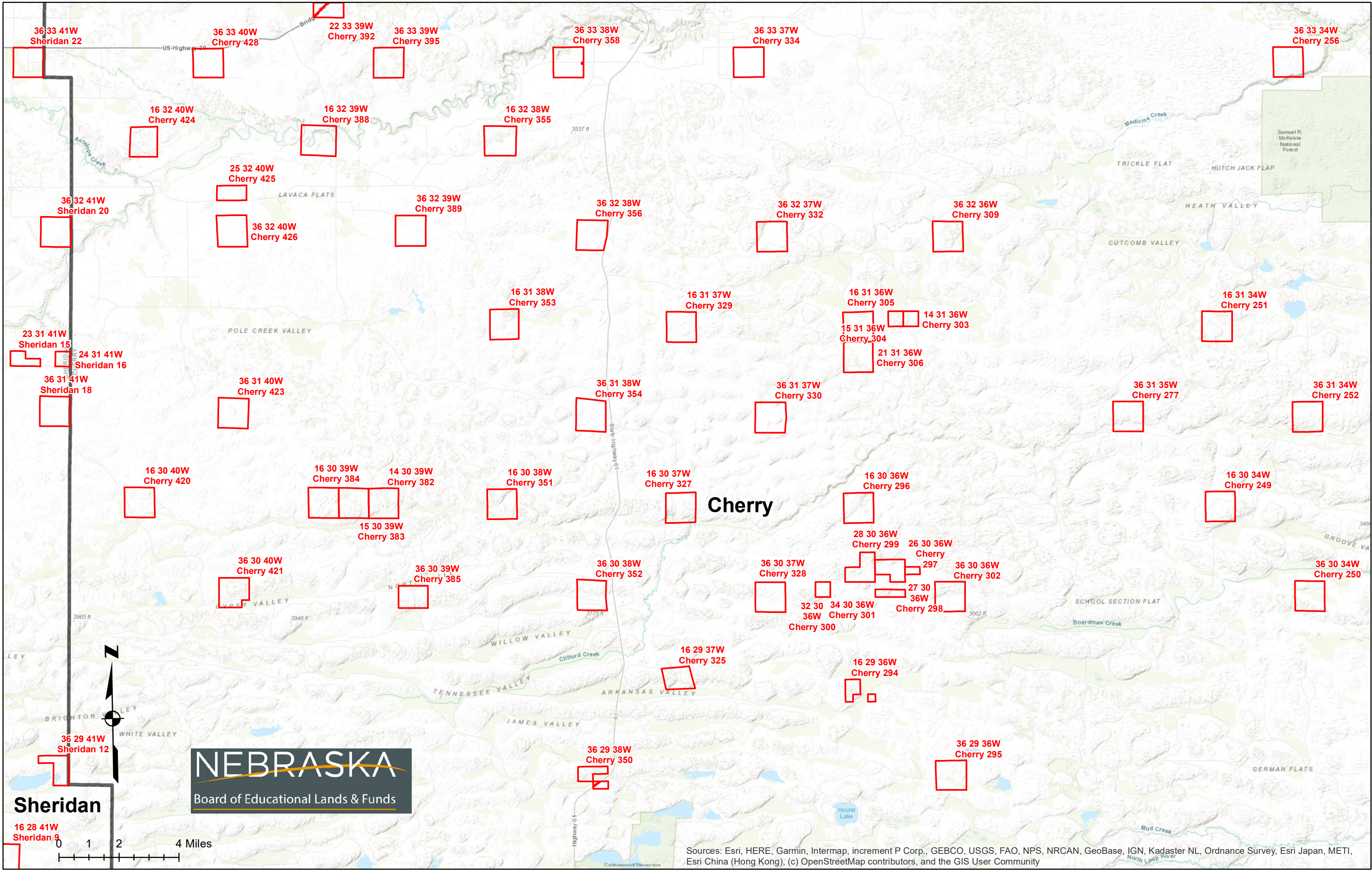


Sources: Esri, HERE, Garmin, Intermap, increment P Corp., GEBCO, USGS, FAO, NPS, NRCAN, GeoBase, IGN, Kadaster NL, Ordnance Survey, Esri Japan, METI, Esri China (Hong Kong), (c) OpenStreetMap contributors, and the GIS User Community



36 33 41W Sheridan 22

36 33 40W Cherry 428

22 33 39W Cherry 392

36 33 39W Cherry 395

36 33 38W Cherry 358

36 33 37W Cherry 334

36 33 34W Cherry 256

16 32 40W Cherry 424

16 32 39W Cherry 388

16 32 38W Cherry 355

25 32 40W Cherry 425

36 32 39W Cherry 389

36 32 38W Cherry 356

36 32 37W Cherry 332

36 32 36W Cherry 309

36 32 41W Sheridan 20

36 32 40W Cherry 426

16 31 38W Cherry 353

16 31 37W Cherry 329

16 31 36W Cherry 305

15 31 36W Cherry 304

14 31 36W Cherry 303

16 31 34W Cherry 251

23 31 41W Sheridan 15

24 31 41W Sheridan 16

36 31 41W Sheridan 18

36 31 40W Cherry 423

36 31 38W Cherry 354

36 31 37W Cherry 330

36 31 36W Cherry 306

21 31 36W Cherry 306

36 31 35W Cherry 277

36 31 34W Cherry 252

16 30 40W Cherry 420

16 30 39W Cherry 384

14 30 39W Cherry 382

16 30 38W Cherry 351

16 30 37W Cherry 327

16 30 36W Cherry 296

16 30 34W Cherry 249

36 30 40W Cherry 421

36 30 39W Cherry 385

36 30 38W Cherry 352

36 30 37W Cherry 328

28 30 36W Cherry 299

26 30 36W Cherry 297

36 30 36W Cherry 302

15 30 39W Cherry 383

32 30 36W Cherry 300

34 30 36W Cherry 301

27 30 36W Cherry 298

36 30 34W Cherry 250

16 29 37W Cherry 325

16 29 36W Cherry 294

36 29 38W Cherry 350

36 29 36W Cherry 295

16 28 41W Sheridan 9

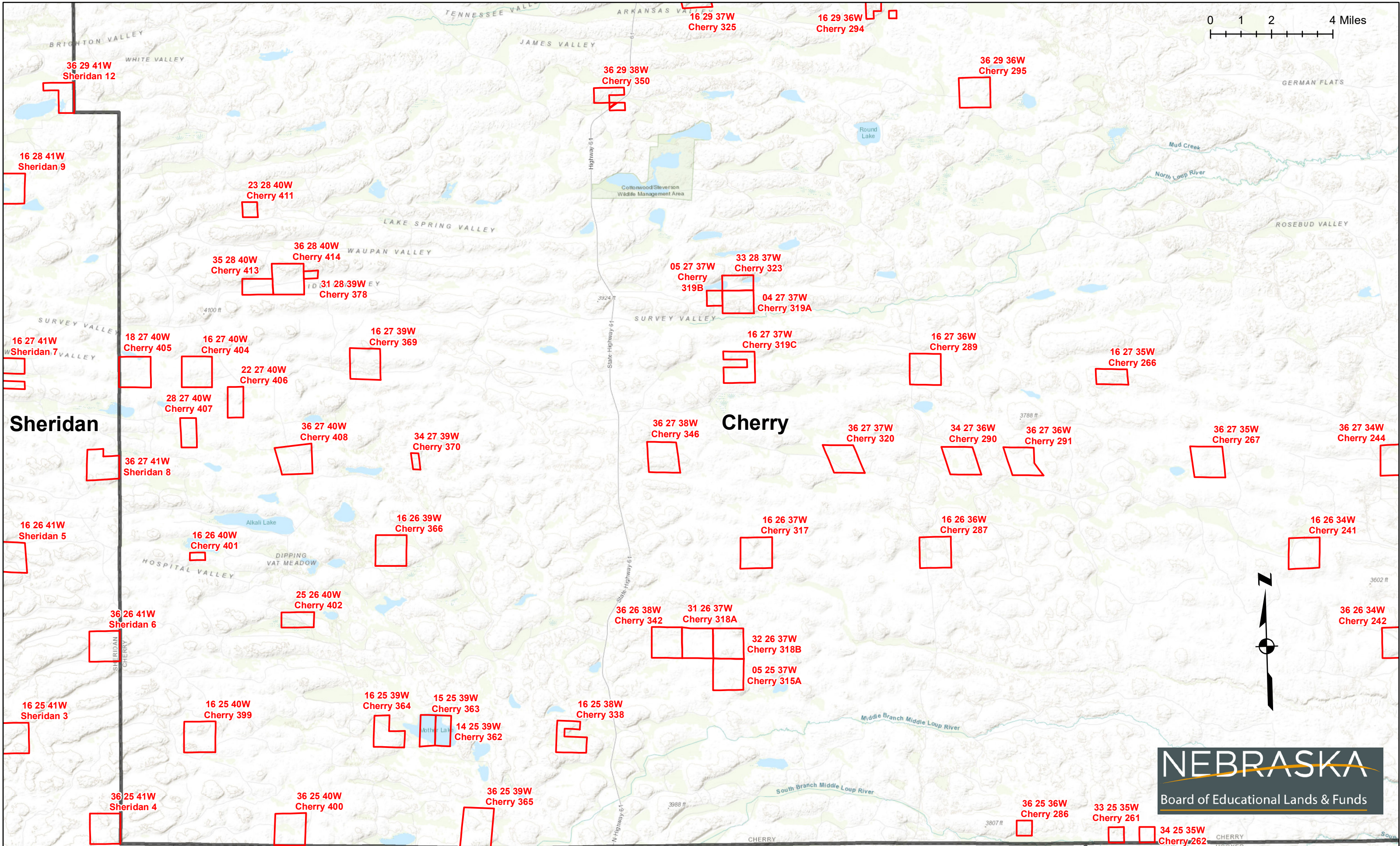
Cherry

NEBRASKA
Board of Educational Lands & Funds

0 1 2 4 Miles

Sources: Esri, HERE, Garmin, Intermap, increment P Corp., GEBCO, USGS, FAO, NPS, NRCAN, GeoBase, IGN, Kadaster NL, Ordnance Survey, Esri Japan, METI, Esri China (Hong Kong), (c) OpenStreetMap contributors, and the GIS User Community

0 1 2 4 Miles



Sheridan

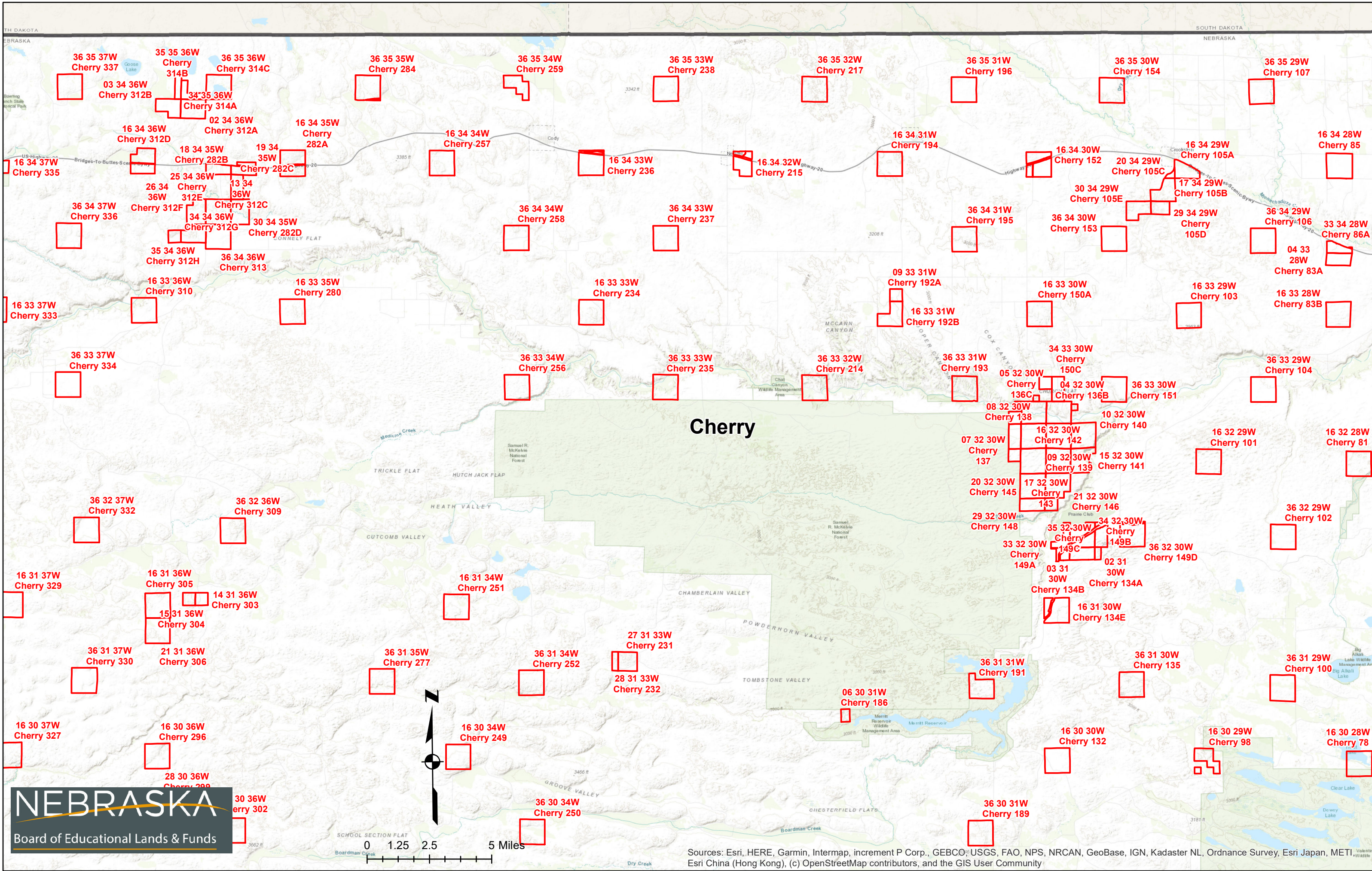
Cherry

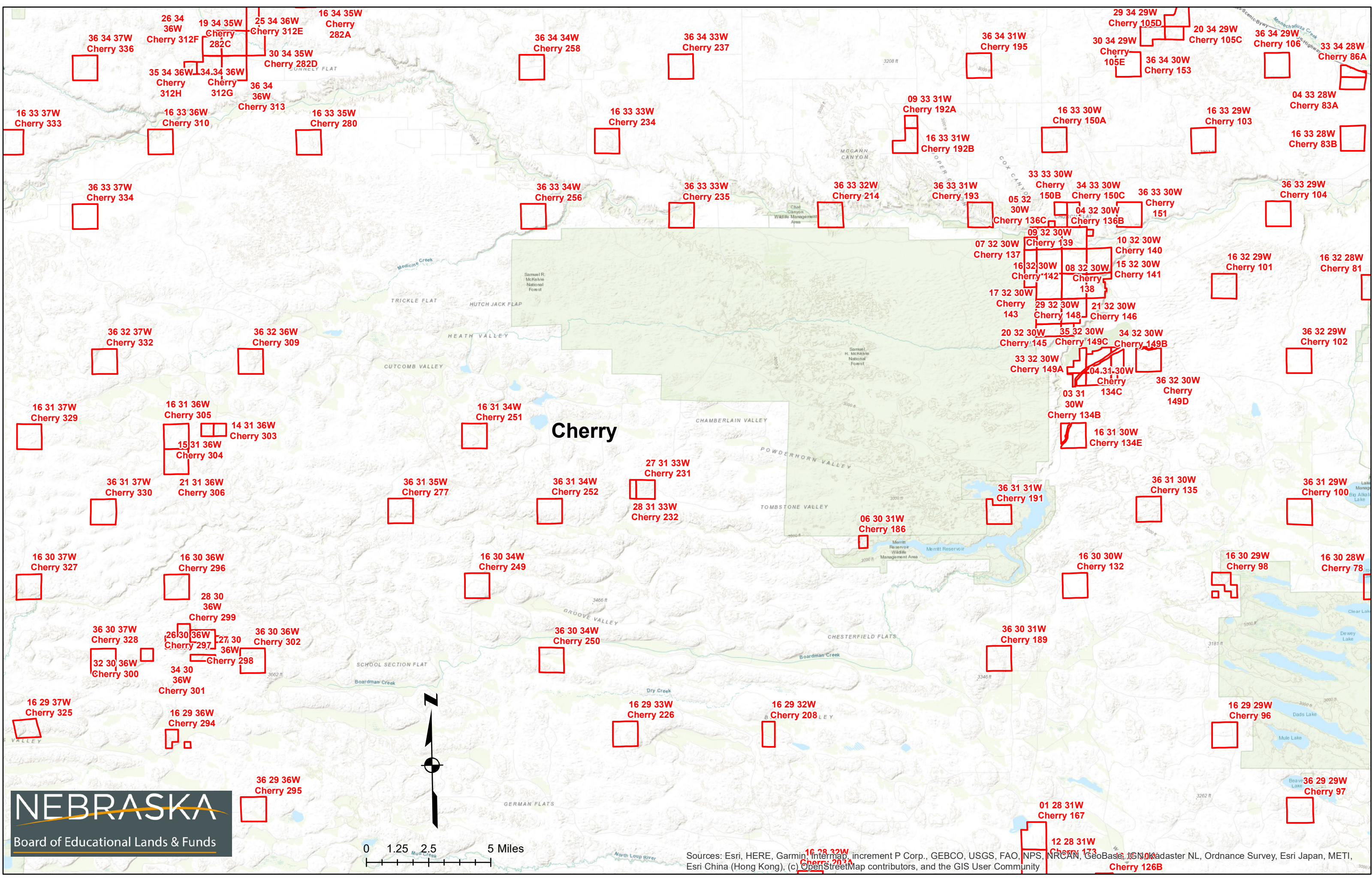
Grant

NEBRASKA Board of Educational Lands & Funds

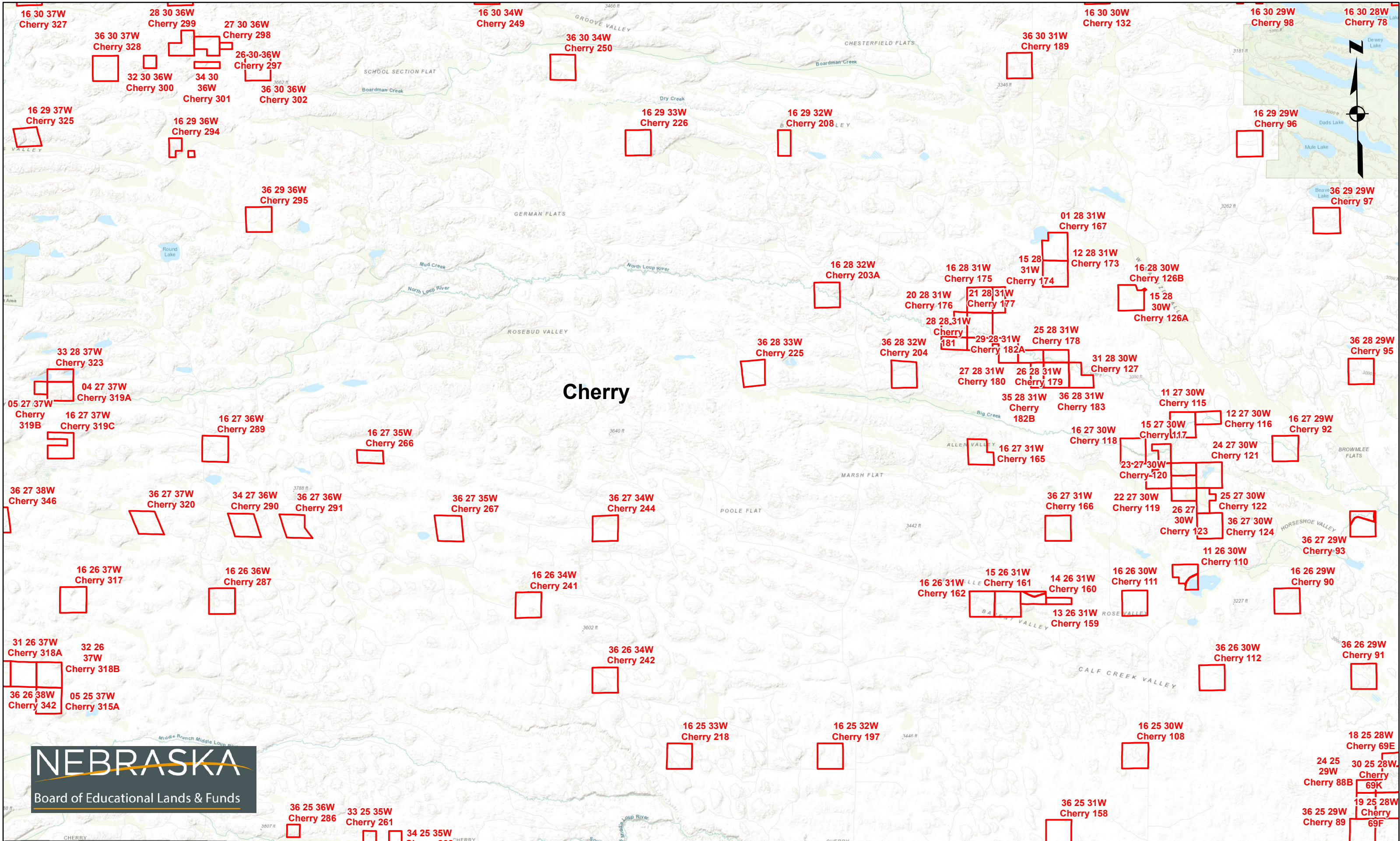


Sources: Esri, HERE, Garmin, Intermap, increment P Corp., GEBCO, USGS, FAO, NPS, NRCAN, GeoBase, IGN, Kadaster NL, Ordnance Survey, Esri Japan, METI, Esri China (Hong Kong), (c) OpenStreetMap contributors, and the GIS User Community





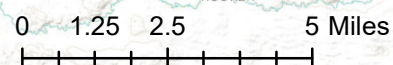
36 34 37W Cherry 336
26 34 36W Cherry 312F
19 34 35W Cherry 282C
25 34 36W Cherry 312E
16 34 35W Cherry 282A
36 34 34W Cherry 258
36 34 33W Cherry 237
36 34 31W Cherry 195
29 34 29W Cherry 105D
20 34 29W Cherry 105C
36 34 29W Cherry 106
33 34 28W Cherry 86A
35 34 36W Cherry 312H
34 34 36W Cherry 312G
30 34 35W Cherry 282D
36 34 36W Cherry 313
16 33 37W Cherry 333
16 33 36W Cherry 310
16 33 35W Cherry 280
16 33 33W Cherry 234
16 33 31W Cherry 192A
16 33 31W Cherry 192B
36 34 30W Cherry 153
04 33 28W Cherry 83A
16 33 29W Cherry 103
16 33 28W Cherry 83B
36 33 37W Cherry 334
36 33 34W Cherry 256
36 33 33W Cherry 235
36 33 32W Cherry 214
36 33 31W Cherry 193
33 33 30W Cherry 150B
34 33 30W Cherry 150C
36 33 30W Cherry 151
05 32 30W Cherry 136C
04 32 30W Cherry 136B
09 32 30W Cherry 139
07 32 30W Cherry 137
10 32 30W Cherry 140
15 32 30W Cherry 141
16 32 30W Cherry 142
08 32 30W Cherry 138
17 32 30W Cherry 143
29 32 30W Cherry 148
21 32 30W Cherry 146
20 32 30W Cherry 145
35 32 30W Cherry 149C
34 32 30W Cherry 149B
33 32 30W Cherry 149A
04 31 30W Cherry 134C
36 32 30W Cherry 149D
03 31 30W Cherry 134B
16 31 30W Cherry 134E
16 32 29W Cherry 101
16 32 28W Cherry 81
16 31 37W Cherry 329
16 31 36W Cherry 305
14 31 36W Cherry 303
15 31 36W Cherry 304
21 31 36W Cherry 306
36 31 37W Cherry 330
36 31 35W Cherry 277
36 31 34W Cherry 251
36 31 34W Cherry 252
27 31 33W Cherry 231
28 31 33W Cherry 232
06 30 31W Cherry 186
36 31 31W Cherry 191
36 31 30W Cherry 135
36 31 29W Cherry 100
16 30 37W Cherry 327
16 30 36W Cherry 296
28 30 36W Cherry 299
36 30 37W Cherry 328
26 30 36W Cherry 297
27 30 36W Cherry 298
36 30 36W Cherry 302
32 30 36W Cherry 300
34 30 36W Cherry 301
16 29 37W Cherry 325
16 29 36W Cherry 294
36 30 34W Cherry 249
36 30 34W Cherry 250
16 29 33W Cherry 226
16 29 32W Cherry 208
36 30 31W Cherry 189
16 30 30W Cherry 132
16 30 29W Cherry 98
16 30 28W Cherry 78
16 29 29W Cherry 96
36 29 29W Cherry 97
01 28 31W Cherry 167
12 28 31W Cherry 173
16 28 32W Cherry 201
Cherry 126B



Cherry

NEBRASKA
Board of Educational Lands & Funds

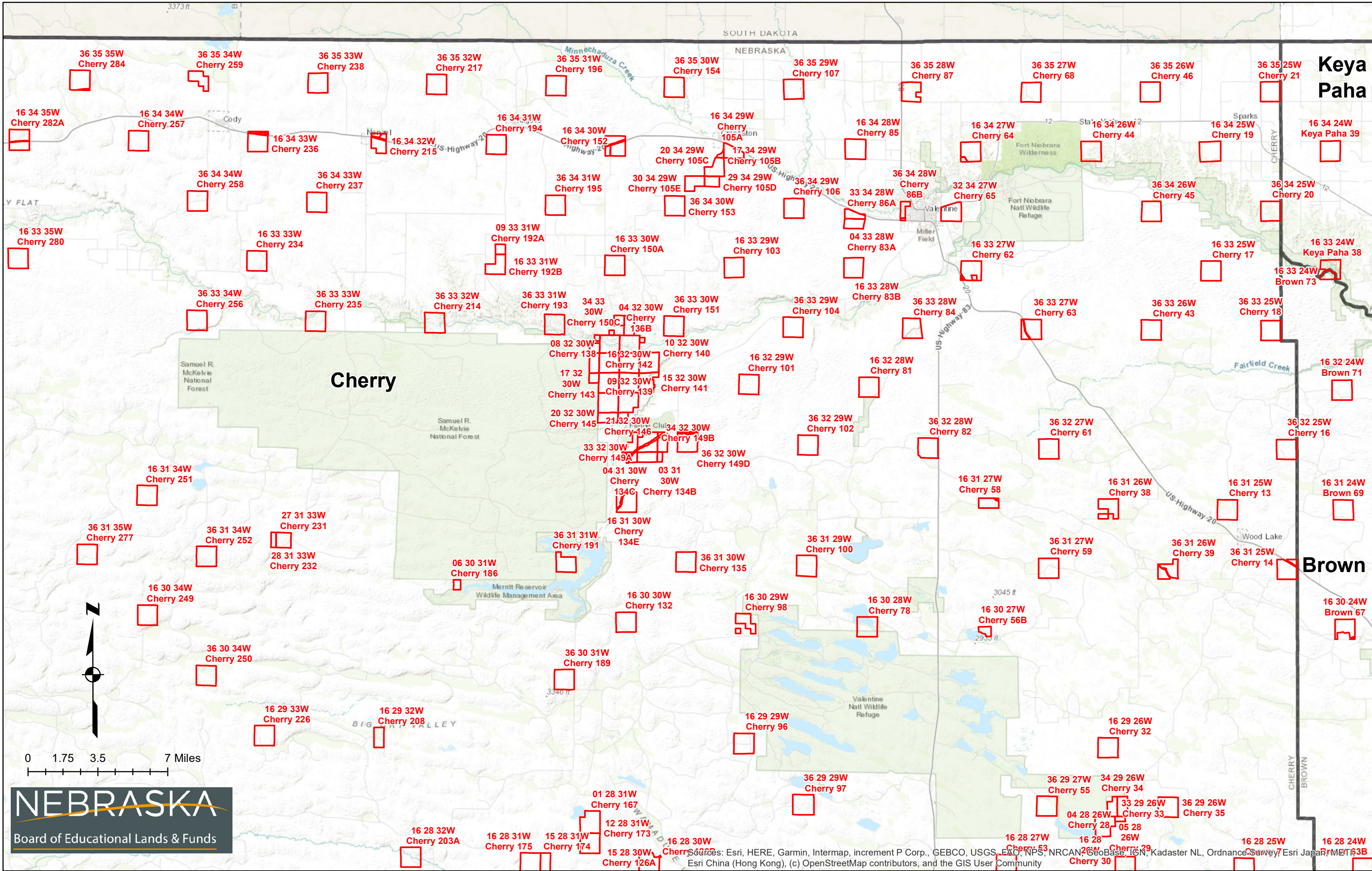
Grant



Hooker

Thomas

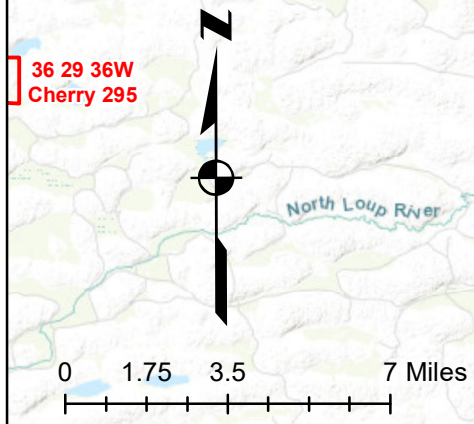
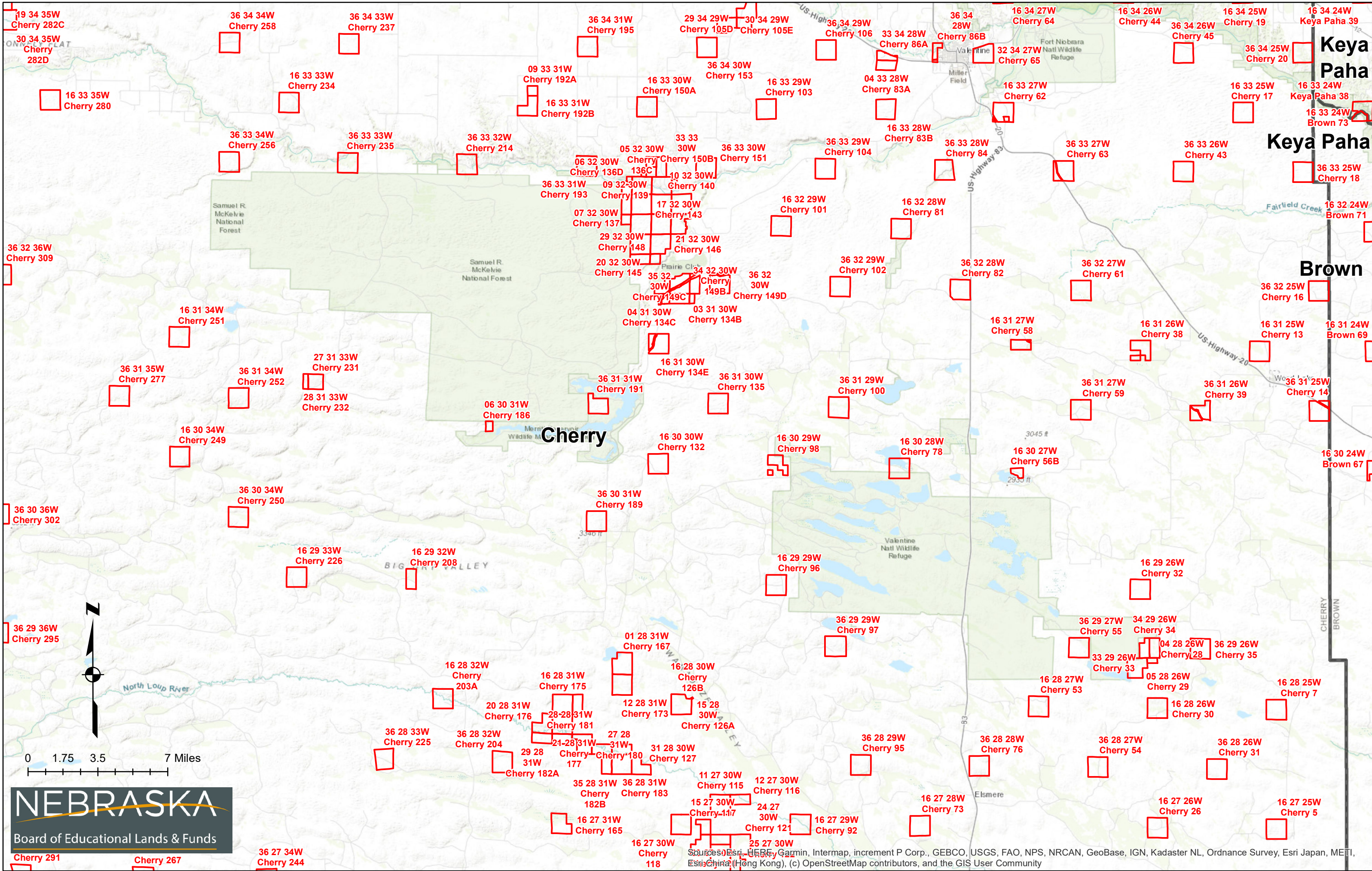
Sources: Esri, HERE, Garmin, Intermap, increment P Corp., GEBCO, USGS, FAO, NPS, NRCAN, GeoBase, IGN, Kadaster NL, Ordnance Survey, Esri Japan, METI, Esri China (Hong Kong), (c) OpenStreetMap contributors, and the GIS User Community



0 1.75 3.5 7 Miles

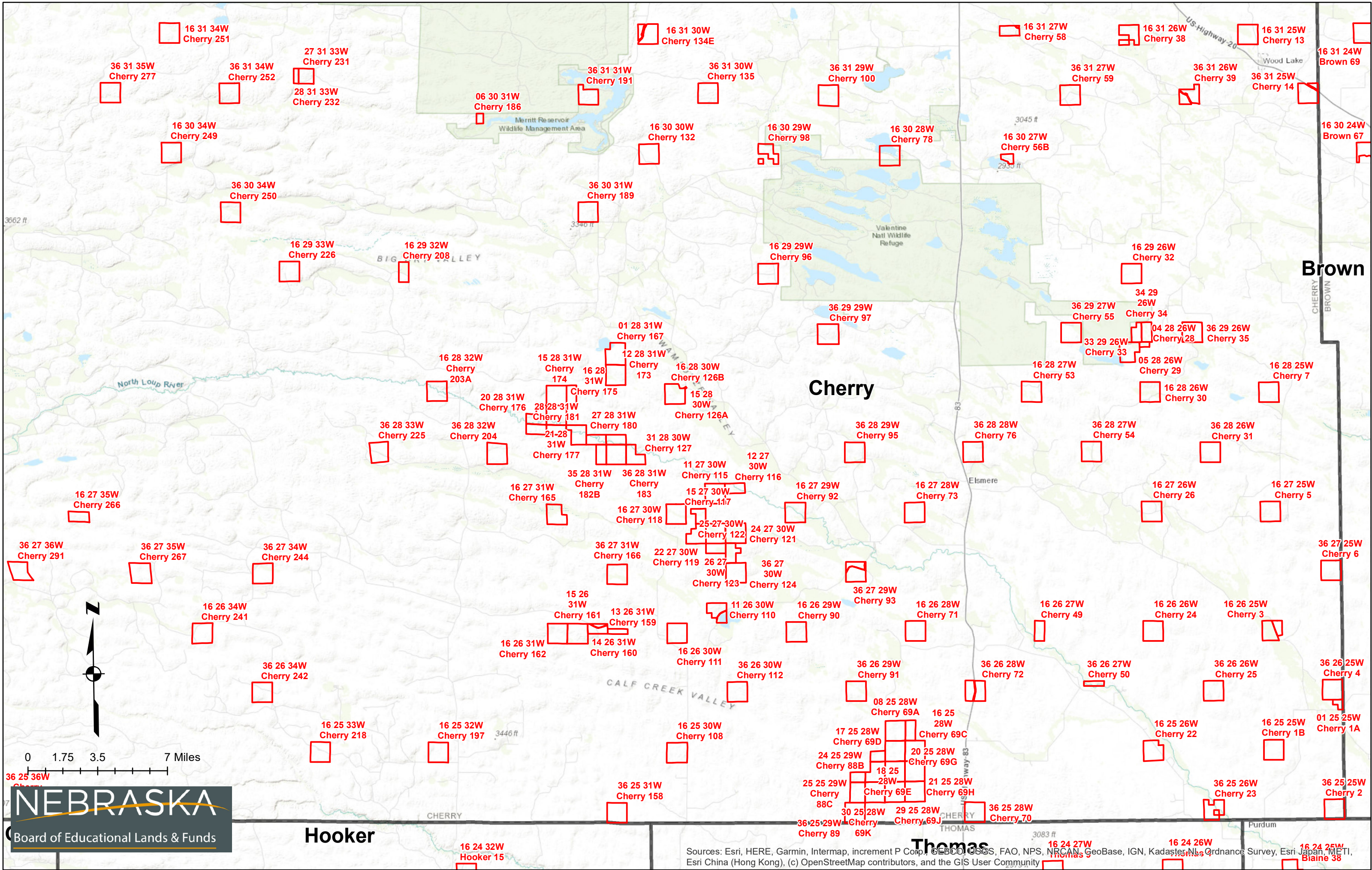


Sources: Esri, HERE, Garmin, Intermap, increment P Corp., GEBCO, USGS, FAO, NPS, NRCAN, GeoBase, IGN, Kadaster NL, Ordnance Survey, Esri Japan, Esri China (Hong Kong), (c) OpenStreetMap contributors, and the GIS User Community



NEBRASKA
Board of Educational Lands & Funds

Sources: Esri, HERE, Garmin, Intermap, increment P Corp., GEBCO, USGS, FAO, NPS, NRCAN, GeoBase, IGN, Kadaster NL, Ordnance Survey, Esri Japan, METI, Esri China (Hong Kong), (c) OpenStreetMap contributors, and the GIS User Community



NEBRASKA
Board of Educational Lands & Funds

Hooker

Thomas

Sources: Esri, HERE, Garmin, Intermap, increment P Corp., GEBCO, USGS, FAO, NPS, NRCAN, GeoBase, IGN, Kadaster NL, Ordnance Survey, Esri Japan, METI, Esri China (Hong Kong), (c) OpenStreetMap contributors, and the GIS User Community